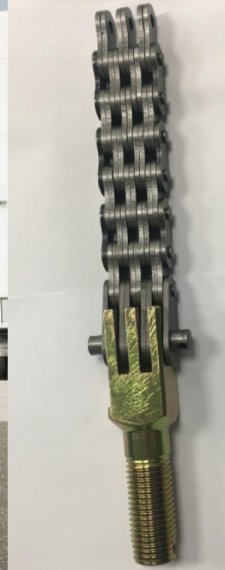




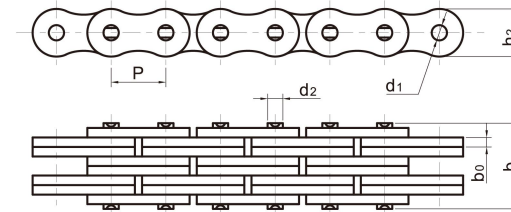
# 曳引链

## SERIES DRAGGING CHAINS



### AL系列板式链

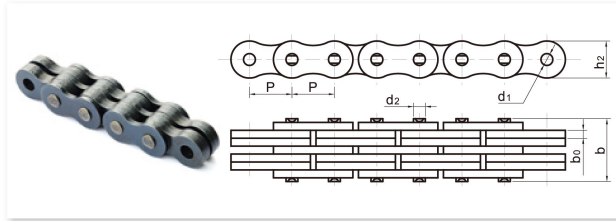
#### LEAF CHAINS(AL SERIES)



GL Chain No.	节距 Pitch		链板组合 Plate Lacing	链板厚度 Thickness of Plate	铰接链节链板孔径 Inside Plate Hole dia.	销轴直径 Pin dia.	链板高度 Plate depth	销轴高度 Pin Overall Length	抗拉强度 Ultimate tensile strength	每米重量 Weight per meter
	P in	P mm								
AL422			2X2					8.40	17.00	0.35
AL444	1/2"	12.70	4X4	1.52	4.01	3.96	10.30	14.80	34.00	0.67
AL466			6X6					21.20	51.00	1.00
AL522			2X2					10.20	28.30	0.63
AL544	5/8"	15.875	4X4	2.05	5.13	5.08	13.00	18.90	56.60	1.20
AL566			6X6					27.40	84.90	1.75
AL622			2X2					12.20	39.30	0.93
AL644	3/4"	19.05	4X4	2.40	6.00	5.94	15.60	22.10	78.60	1.60
AL666			6X6					32.00	117.90	2.52
AL822			2X2					16.40	69.50	1.54
AL844	1"	25.40	4X4	3.20	8.01	7.94	20.55	29.80	139.00	3.30
AL866			6X6					43.20	208.50	4.01
AL1022			2X2					19.50	103.00	2.37
AL1044	1.1/4"	31.75	4X4	4.00	9.60	9.53	25.85	36.70	206.00	4.90
AL1066			6X6					53.20	309.00	7.30
AL1222			2X2					24.00	140.00	3.65
AL1244	1.1/2"	38.10	4X4	4.80	11.18	11.11	31.20	43.80	280.00	7.05
AL1266			6X6					63.60	420.00	10.50
AL1444	1.3/4"	44.45	4X4	5.60	12.78	12.70	38.20	51.10	370.00	10.34
AL1466			6X6					74.30	555.00	13.00
AL1644	2"	50.80	4X4	6.40	14.36	14.29	41.60	58.20	465.00	12.98
AL1666			6X6					84.60	697.50	18.00



### BL系列板式链 LEAF CHAINS(BL SERIES)



GL Chain No.	节距 Pitch		板数组合 Plates Lacing	链板厚度 Thickness of Plate	铰接链节 Inside plate hole dia.	销轴直径 Pin dia.	链板高度 Plate depth	销轴高度 Pin overall length	抗拉强度 Ultimate tensile strength	重量 Weight approx.	
	P	P									
	in	mm									
ANSI	ISO GB			b0(max)	d1(min)	d2(max)	h2(max)	h2(max)	Q	q	
				mm	mm	mm	mm	mm	kN	kg/m	
BL-422	LH0822	1/2"	12.70	2X2	2.08	5.11	5.09	12.07	11.10	22.20	0.66
BL-423	LH0823			2X3					13.20	22.20	0.82
BL-434	LH0834			3X4					17.40	33.40	1.14
BL-444	LH0844			4X4					19.60	44.50	1.61
BL-446	LH0846			4X6					23.80	44.50	1.61
BL-466	LH0866			6X6					28.00	66.70	1.92
BL-488	LH0888			8X8					36.50	88.96	2.55
BL-522	LH1022	5/8"	15.875	2X2	2.48	5.98	5.96	15.09	12.90	33.40	0.97
BL-523	LH1023			2X3					15.40	33.40	1.20
BL-534	LH1034			3X4					20.40	48.90	1.65
BL-544	LH1044			4X4					22.80	66.70	1.89
BL-546	LH1046			4X6					27.70	66.70	2.34
BL-566	LH1066			6X6					32.20	100.10	2.81
BL-588	LH1088			8X8					42.60	133.44	3.72
BL-622	LH1222	3/4"	19.05	2X2	3.30	7.96	7.94	18.11	17.40	48.90	1.56
BL-623	LH1223			2X3					20.80	48.90	1.92
BL-634	LH1234			3X4					27.50	75.60	2.65
BL-644	LH1244			4X4					30.80	97.90	3.02
BL-646	LH1246			4X6					37.50	97.90	3.77
BL-666	LH1266			6X6					44.20	146.80	4.45
BL-688	LH1288			8X8					57.60	195.72	5.94
BL-822	LH1622	1"	25.40	2X2	4.09	9.56	9.54	24.13	21.40	84.50	2.41
BL-823	LH1623			2X3					25.50	84.50	3.07
BL-834	LH1634			3X4					33.80	129.00	4.24
BL-844	LH1644			4X4					37.90	169.00	5.06
BL-846	LH1646			4X6					46.20	169.00	6.06
BL-866	LH1666			6X6					54.50	253.60	7.38
BL-888	LH1688			8X8					71.10	338.06	9.57

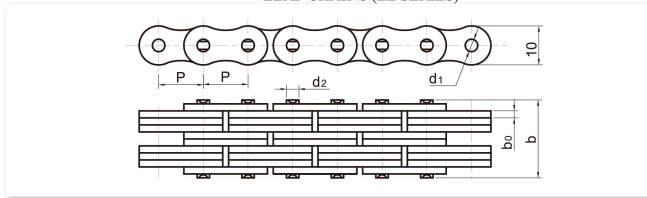


### BL系列板式链 LEAF CHAINS(BL SERIES)

GL Chain No.	节距 Pitch		板数组合 Plates Lacing	链板厚度 Thickness of Plate	铰接链节 Inside plate hole dia.	销轴直径 Pin dia.	链板高度 Plate depth	销轴高度 Pin overall length	抗拉强度 Ultimate tensile strength	重量 Weight approx.	
	P	P									
	in	mm									
ANSI	ISO GB			b0(max)	d1(min)	d2(max)	h2(max)	h2(max)	Q	q	
				mm	mm	mm	mm	mm	kN	kg/m	
BL-1022	LH2022	1.114"	31.75	2X2	4.90	11.14	11.11	30.18	25.40	115.60	3.84
BL-1023	LH2023			2X3					30.40	115.60	4.78
BL-1034	LH2034			3X4					40.30	182.40	6.62
BL-1044	LH2044			4X4					45.20	231.30	7.52
BL-1046	LH2046			4X6					55.10	231.30	9.41
BL-1066	LH2066			6X6					65.00	347.00	11.19
BL-1088	LH2088			8X8					84.80	462.60	14.87
BL-1222	LH2422	1.1/2"	38.10	2X2	5.77	12.74	12.71	36.20	29.70	151.20	5.51
BL-1223	LH2423			2X3					35.50	151.20	6.90
BL-1234	LH2434			3X4					47.10	244.60	9.56
BL-1244	LH2444			4X4					52.90	302.50	10.85
BL-1246	LH2446			4X6					64.60	302.50	13.59
BL-1266	LH2466			6X6					76.20	453.70	14.23
BL-1288	LH2488			8X8					99.50	606.94	21.49
BL-1422	LH2822	1.3/4"	44.45	2X2	6.60	14.31	14.29	42.24	33.60	191.27	6.95
BL-1423	LH2823			2X3					40.20	191.27	8.69
BL-1434	LH2834			3X4					53.40	315.81	12.06
BL-1444	LH2844			4X4					60.00	382.53	13.68
BL-1446	LH2846			4X6					73.20	382.53	17.18
BL-1466	LH2846			6X6					86.40	578.24	20.42
BL-1488	LH2888			8X8					112.80	765.06	27.16
BL-1622	LH3222	2"	50.80	2X2	7.52	17.49	17.46	48.26	40.00	289.10	8.72
BL-1623	LH3223			2X3					46.60	289.10	10.90
BL-1634	LH3234			3X4					61.80	440.40	15.08
BL-1644	LH3244			4X4					69.30	578.30	17.07
BL-1646	LH3246			4X6					84.50	578.30	21.44
BL-1666	LH3266			6X6					100.00	867.40	25.42
BL-1688	LH3288			8X8					129.90	1156.48	33.78
	LH4022	2.1/2"	63.50	2X2	9.91	23.84	23.81	60.33	51.80	433.70	16.90
	LH4023			2X3					61.70	433.70	20.96
	LH4034			3X4					61.70	649.40	29.09
	LH4044			4X4					91.60	867.40	33.14
	LH4046			4X6					111.50	867.40	41.26
	LH4066			6X6					131.40	1301.10	49.37
	LH4088			8X8					171.10	1734.72	65.61
DB25			25	4X4	2.50	8.00	7.94	20.50	25	98.00	2.40
DB25A			25	6X6	3.00	11.16	11.10	23.50	41	157.00	5.50
DB30			30	6X6	3.00	11.16	11.10	28.00	41	157.00	6.00



## LL系列板式链 LEAF CHAINS (LL SERIES)



GL Chain No.	节距 Pitch		板数 组合 Plates Lacing	链板厚度 Thickness of Plate	铰接链节 Inside plate hole dia.	销轴直径 Pin dia.	链板高度 Plate depth	销轴高度 Pin overall length	抗拉强度 Ultimate tensile strength	重量 Weight approx.
	P	P		b0(max)	d1(min)	d2(max)	h2(max)	b(max)	Q	q
	in	mm		mm	mm	mm	mm	mm	kN	kg/m
LL0822			2X2					8.50	18	0.48
LL0844	1/2"	12.70	4X4	1.55	4.46	4.45	10.92	14.60	36	0.98
LL0866			6X6					20.70	54	1.44
LL1022			2X2					9.30	22	0.50
LL1044	5/8"	15.875	4X4	1.65	5.09	5.08	13.72	16.10	44	0.94
LL1066			6X6					22.90	66	1.40
LL1222			2X2					10.70	29	0.70
LL1244	3/4"	19.05	4X4	1.90	5.73	5.72	16.13	18.50	58	1.30
LL1266			6X6					26.30	87	2.00
LL1622			2X2					17.20	60	1.60
LL1644	1"	25.40	4X4	3.20	8.30	8.28	21.06	30.20	120	2.90
LL1666			6X6					43.20	180	4.30
LL2022			2X2					20.10	95	2.30
LL2044	1.1/4"	31.75	4X4	3.70	10.21	10.19	26.42	35.10	190	4.20
LL2066			6X6					50.10	285	6.30
LL2422			2X2					28.40	170	4.60
LL2444	1.1/2"	38.10	4X4	5.20	14.65	14.63	33.40	49.40	340	8.20
LL2466			6X6					70.40	510	12.00
LL2822			2X2					34.00	200	4.80
LL2844	1.3/4"	44.45	4X4	6.45	15.92	15.90	37.08	60.00	400	9.50
LL2866			6X6					86.00	600	15.50
LL3222			2X2					35.00	260	6.20
LL3244	2"	50.80	4X4	6.45	17.83	17.81	42.29	61.00	520	11.90
LL3266			6X6					87.00	780	17.80
LL4022			2X2					44.70	360	11.53
LL4044	2.1/2"	63.50	4X4	8.25	22.91	22.89	52.96	77.90	720	22.49
LL4066			6X6					111.10	1080	33.48
LL4822			2X2					56.10	560	17.31
LL4844	3"	76.20	4X4	10.30	29.26	29.24	63.88	97.40	1120	33.61
LL4866			6X6					138.90	1680	49.91